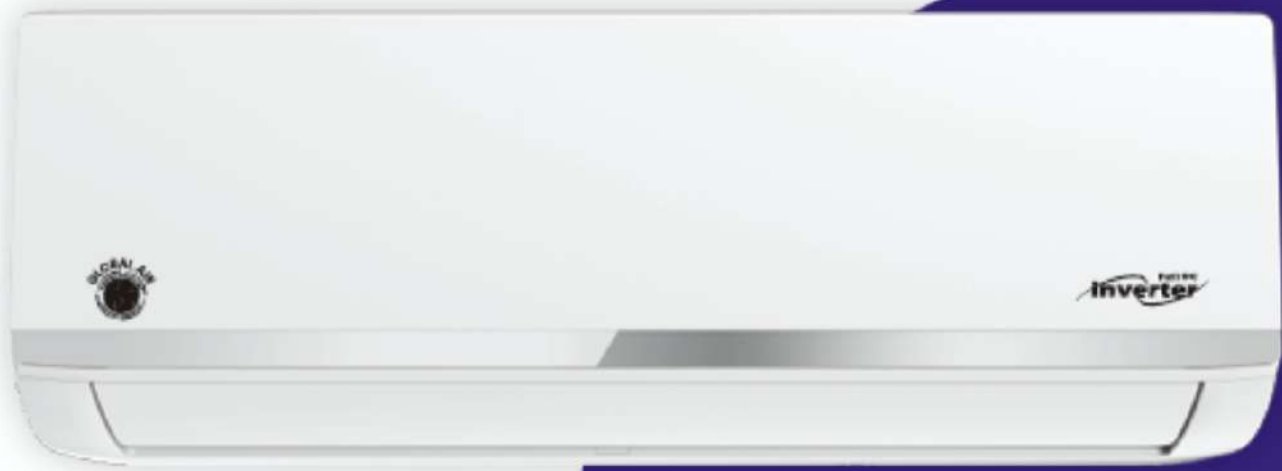


# AIR CONDITIONERS & ACCESSORIES



***Available in : 12000 BTU, 18000 BTU & 24000 BTU***

**TEL: +592 501-2990 & 643-7274, 189 BARR STREET KITTY, GEORGETOWN**



Gold Fin



Emergency  
Using



High  
Density Filter



Mute  
Operation



Refrigerant  
Leakage Detect



High-Efficiency  
Fan Blades



Smart  
Control



65Hz  
within 6s



Fire-proof  
Electric Box



Wide-range  
Voltage Operation

**cULUS**  
**LISTED**

**AHR** CERTIFIED™  
[www.ahrdirectory.org](http://www.ahrdirectory.org)  
Unitary Small AC  
AHRI Standard 210/240  
Certification applies only when the complete system is listed with AHRI.

**Full DC**  
**inverter**

**20+**  
**SEER**

TEL: +592 501-2990 & 643-7274, 189 BARR STREET KITTY, GEORGETOWN

## AIR CONDITIONERS & ACCESSORIES



**FAN MOTOR - I.D**



**CIRCUIT BOARD**



**BEARING BASE**



**CROSS FLOW FAN  
BLADE**



**ELECTRONIC CONTROL BOX  
ASSEMBLY - INDOOR**



**AMBIENT TEMPERATURE  
SENSOR ASSEMBLY**



**PIPE TEMPERATURE  
SENSOR**



**REMOTE CONTROLLER**



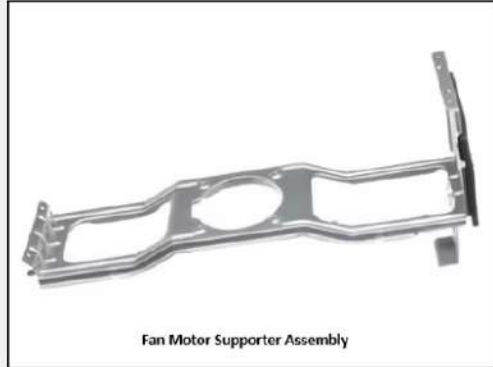
**AXIAL FLOW FAN**



## AIR CONDITIONERS & ACCESSORIES



**FAN MOTOR - 0.D**



Fan Motor Supporter Assembly

**CONDENSOR FAN  
MOTOR BRACKET**



**COMPRESSOR**



**DISPLAY BOX ASSEMBLY**



**COMBINATION SENSOR**



**HVAC LINE COVER KIT -  
3", 4"**



**BRACKET - 36000 BTU**



**BRACKET - 12000 - 24000 BTU**



**R134A**



**R410A**



**R404A**



**R32**



**R600A**



**R290**